

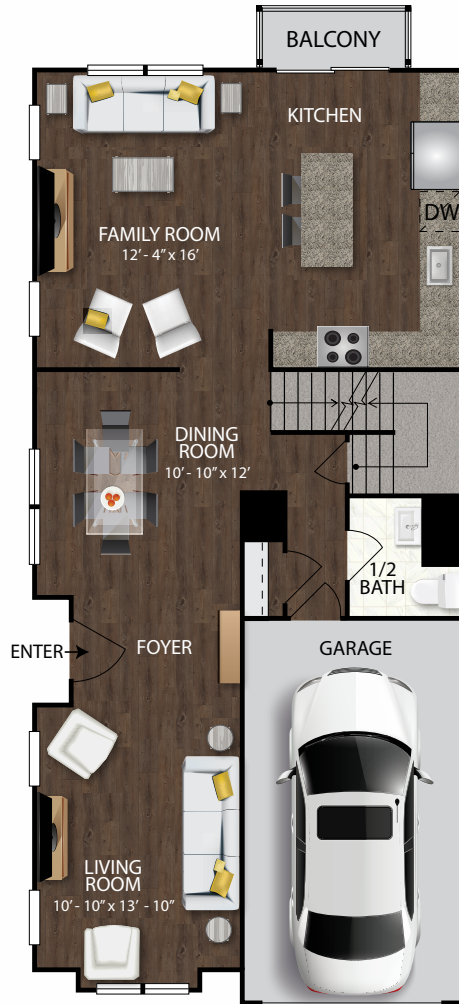
Thoroughbred II

with Walk-Out Finished Basement

- 2,077 sq. ft.
- 3 Bedroom/2.5 Bath
- Garage 251 sq. ft.
- Basement 776 sq. ft.
- Total - 3,104 sq. ft.



BASEMENT



FIRST FLOOR



SECOND FLOOR



Plans and furnishings are for marketing purposes only, and are not to scale. Please inspect construction, subdivision, utility, landscape and other plans available through leasing center for complete and specific information. Actual locations may vary and items shown or not shown on this place are subject to errors, omissions and field changes.

*All units can be reasonably adapted for handicap accessibility for an extra charge.

